

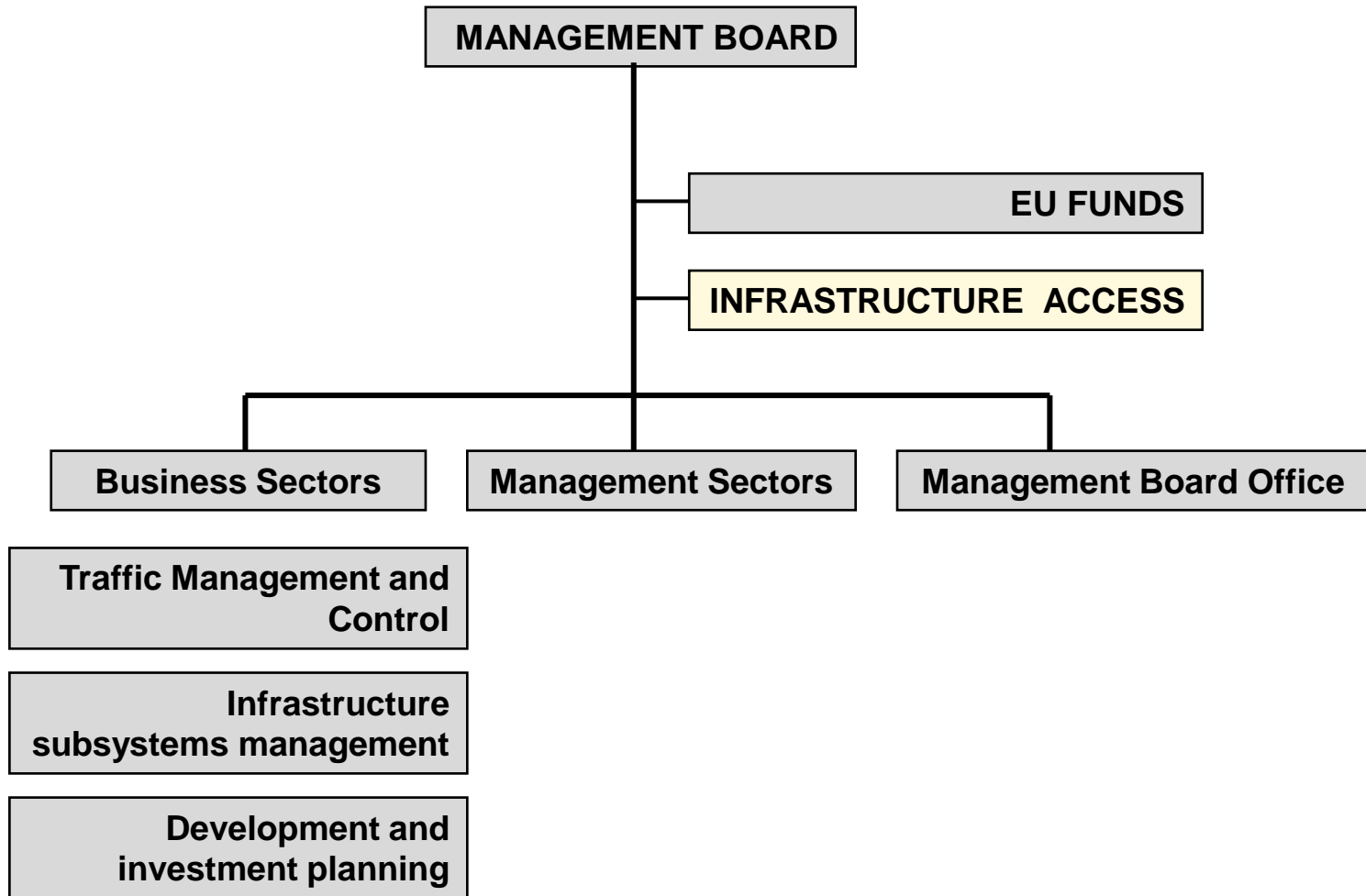
# HŽ INFRASTRUKTURA d.o.o.

*Biserka Keller*

*Infrastructure Access*

**Budapest, November 2015**

## Organization HŽI



## ***Infrastructure Access Department***

**train path allocation  
timetable  
access contract  
level of infrastructure charges  
charging  
network statement  
performance regime  
OSS  
rail freight corridors  
multiannual contract with the State**

## ***Railway Sector in Croatia***

***Croatian Government  
Ministry of Maritime Affairs,  
Transport and Infrastructure***

***HAKOM  
Regulatory Body***

***Croatian  
Railway Safety Agency***

***Designated Body***

**HŽ INFRASTRUKTURA d.o.o.  
Infrastructure Manager**

***Incumbent companies***

**HŽ CARGO d.o.o.**

**HŽ PUTNIČKI PRIJEVOZ d.o.o.**

***Newcomers***

**Rail Cargo Carrier Kft.**

**Rail Cargo Carrier - Croatia**

**RTS Rail Transport Service GmbH**

**PPD TRANSPORT d.o.o.**

**TRAIN HUNGARY MAGÁNVASÚT IPARI**



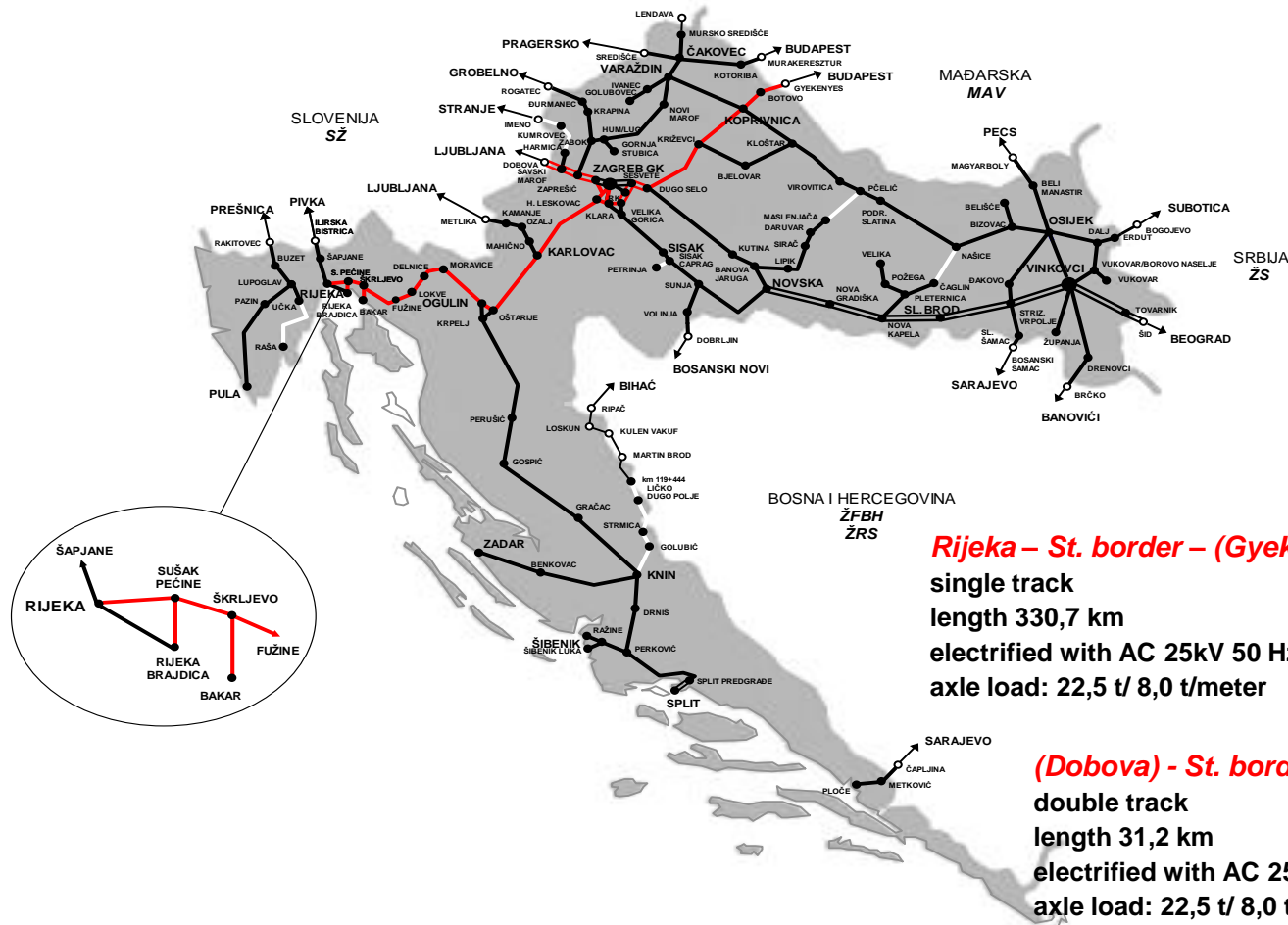
# Network

total length 2605 km  
 double track 254 km  
 single track 2351 km  
 electrified 980 km - AC 25kV,50Hz

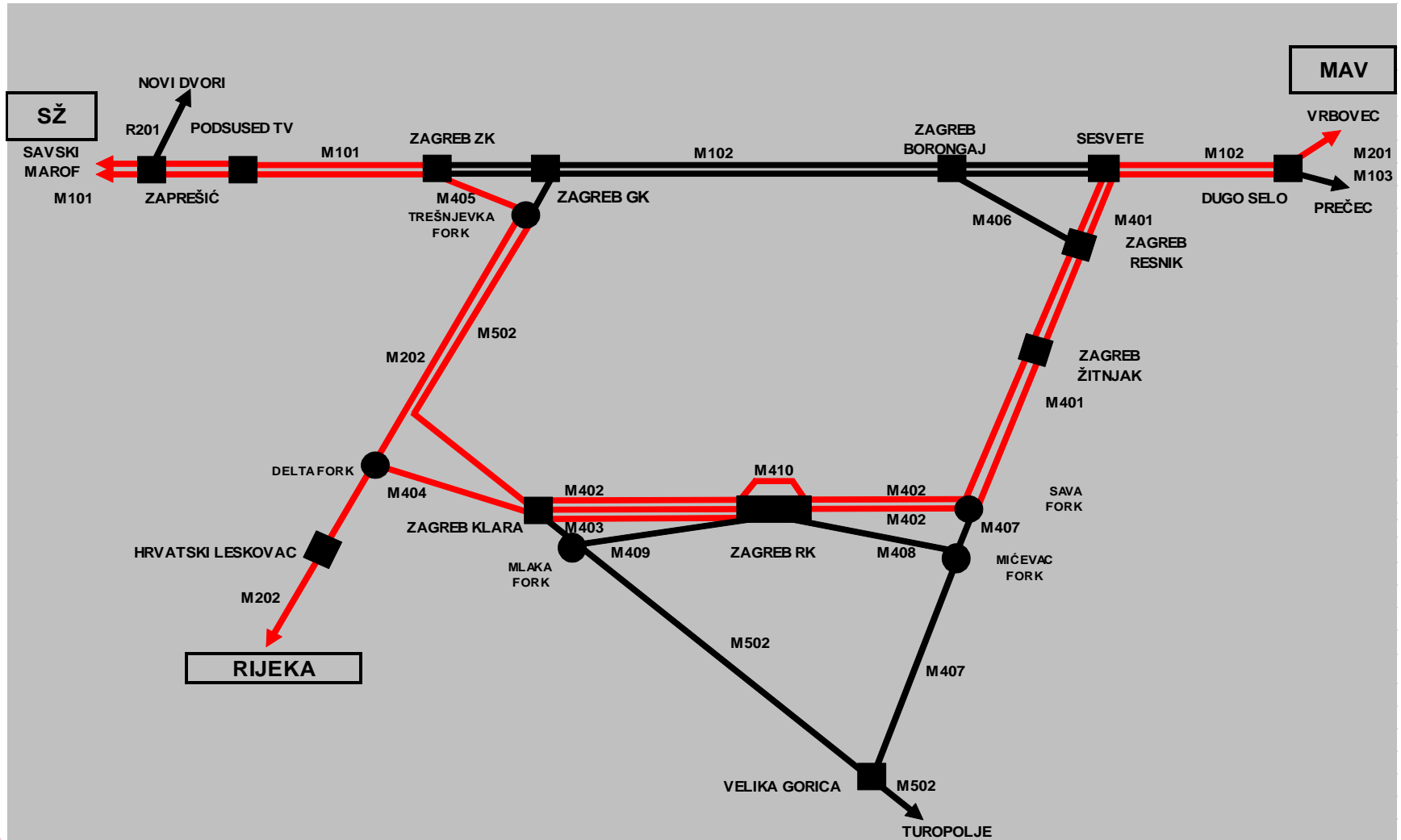


- █ international main line
- █ international connecting line
- █ regional line
- █ local line
- closed to traffic

# Mediterranean corridor – Croatian part



# Zagreb Junction



## ***Mediterranean corridor – extention to Croatia***

**Regulation 913/2010/EC  
Regulation 1316/2013/EC  
Directive 34/2012/EC**

**to be established by November 10th, 2016**

### ***State of play***

***MoU ExBo - December 2015  
FCA – December 2015***

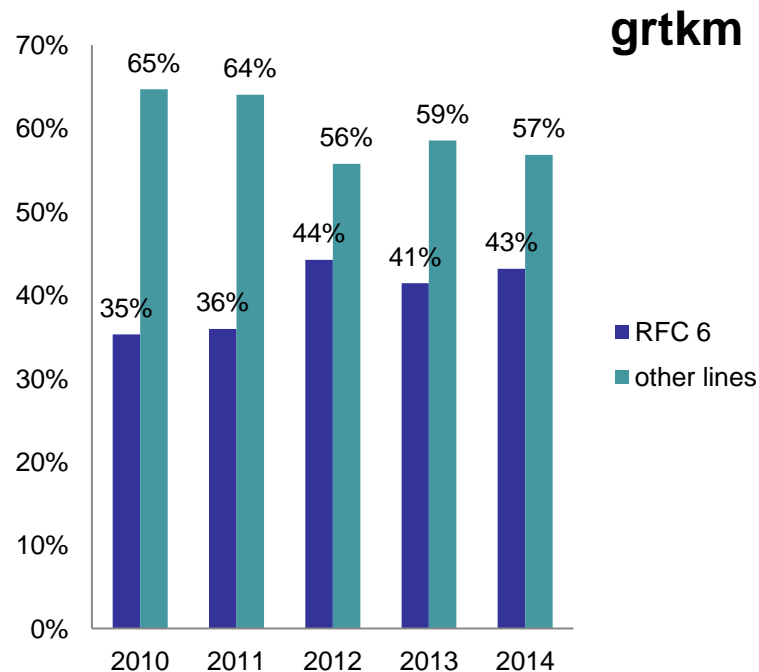
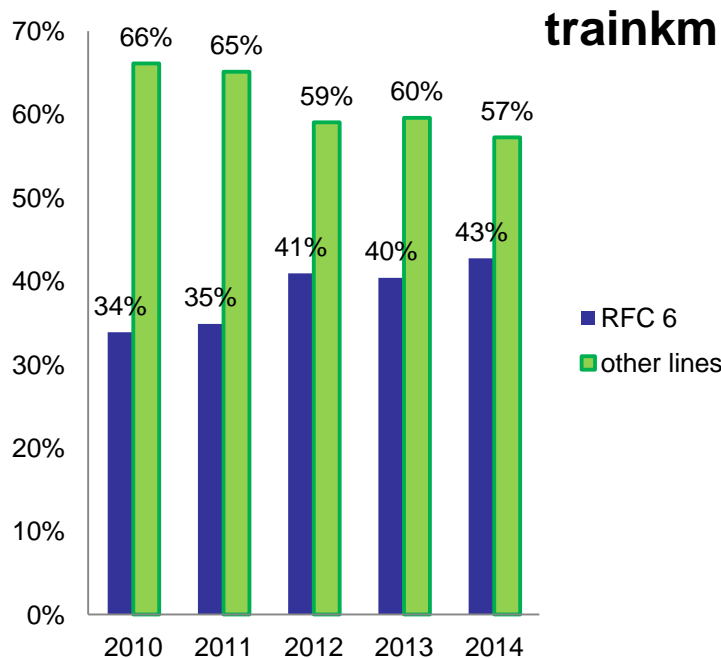
***CID 2016 and 2017 – January 2016***

***MoU MB - June 2016***

***TT 2016/2017      RC  
TT 2017/2018   PaP + RC***



## Freight transport performance



Lines	2010	2011	2012	2013	2014
	trainkm	trainkm	trainkm	trainkm	trainkm
<b>Rijeka - Botovo</b>	2.175.973,49	2.173.779,59	2.405.058,69	2.120.494,49	2.174.770,46
<b>other lines HŽI</b>	4.247.945,90	4.060.358,29	3.470.378,22	3.126.506,67	2.913.394,24
<b>Total HŽI</b>	<b>6.423.919,39</b>	<b>6.234.137,88</b>	<b>5.875.436,91</b>	<b>5.247.001,16</b>	<b>5.088.164,70</b>

## ***Construction Works in Public Procurement Process***

**Construction of 2<sup>nd</sup> track on  
Dugo Selo – Križevci line section**

**start of works January 2016**

## ***Construction Works Projects and Designing***

**Preparation for construction of 2<sup>nd</sup> track,  
upgrade and modernisation of line section  
Škrljevo-Rijeka-Jurdani**

**Designing Project  
Duration of project: 2016 - 2020**

**Port of Rijeka  
Infrastructure upgrading and development, development of  
multimodal platforms and interconnections – Adriatic Gate  
Container Terminal**

**Project partners:  
Port Authority Rijeka and HŽI**

**HŽI  
Reconstruction of Railway Station Rijeka – Brajdica and  
Adriatic Gate Container Terminal Intermodal Yard Brajdica**

**Upgrade and construction of 2<sup>nd</sup> track on line section  
Križevci – Koprivnica – State Border**

**Duration of works: 2017 - 2021**



***Thank you for your attention!***

**[biserka.keller@hzinfra.hr](mailto:biserka.keller@hzinfra.hr)**

**[oss@hzinfra.hr](mailto:oss@hzinfra.hr)**