

**VPE Ltd.**

**VPE**

**Hungarian Rail Capacity Allocation Office**



# Establishment

Independent of Railway Undertakings and Infrastructure Managers



Starting:

- Directive 2001/14/EC Articles 4 (2) and 14 (2) and
- Railway Act XCV of 1993

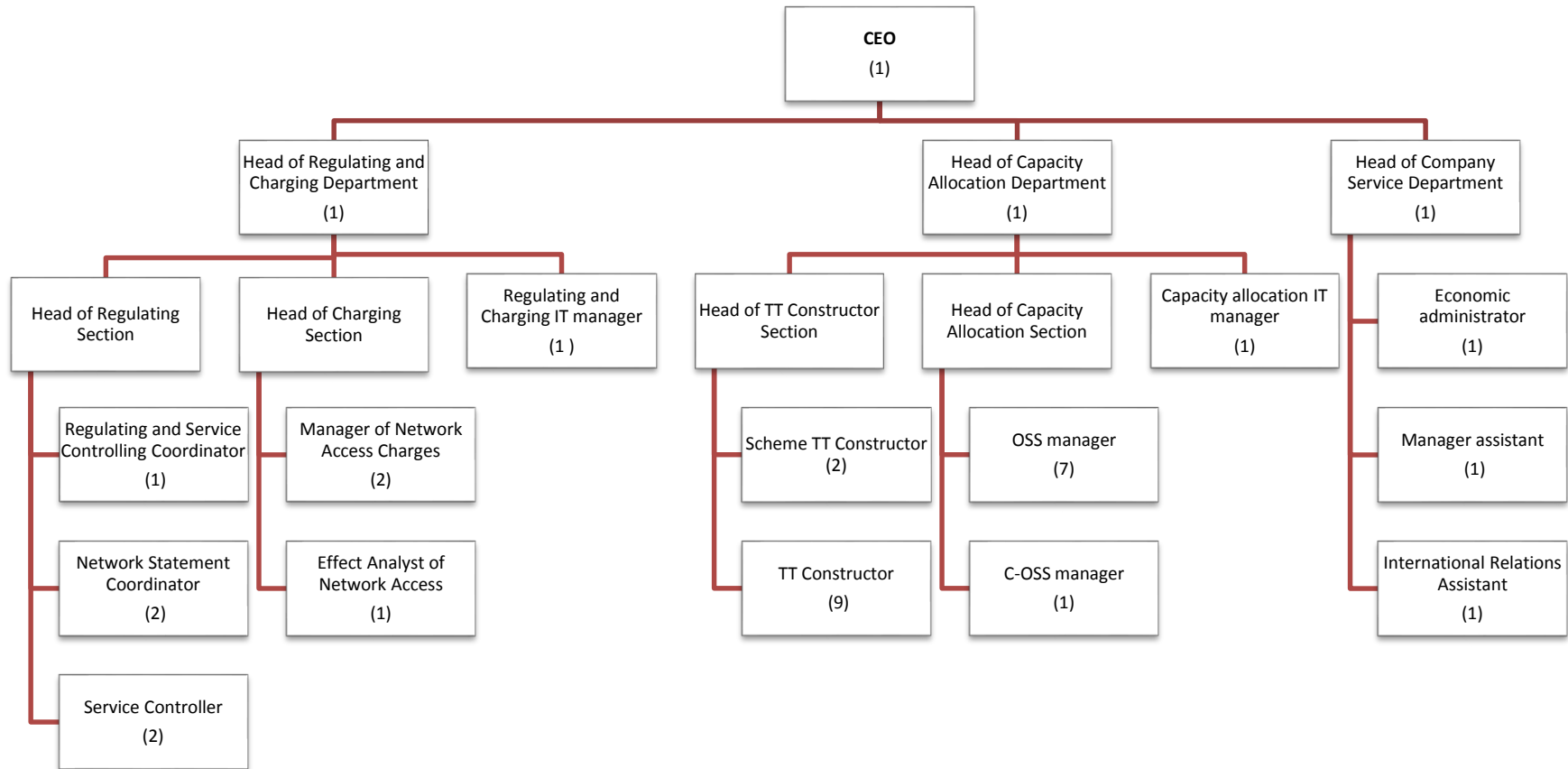
2004

# Establishment

- Nationwide competence
- Owned exclusively by the Republic of Hungary, owner's rights are exercised by the Minister responsible for Transport
- Role of the CEO (Ms. Réka Németh)
- VPE's revenue



# Organisational structure



# Main tasks

According to Section 67 Act CLXXXIII of 2005 on the railway transport we are responsible for:

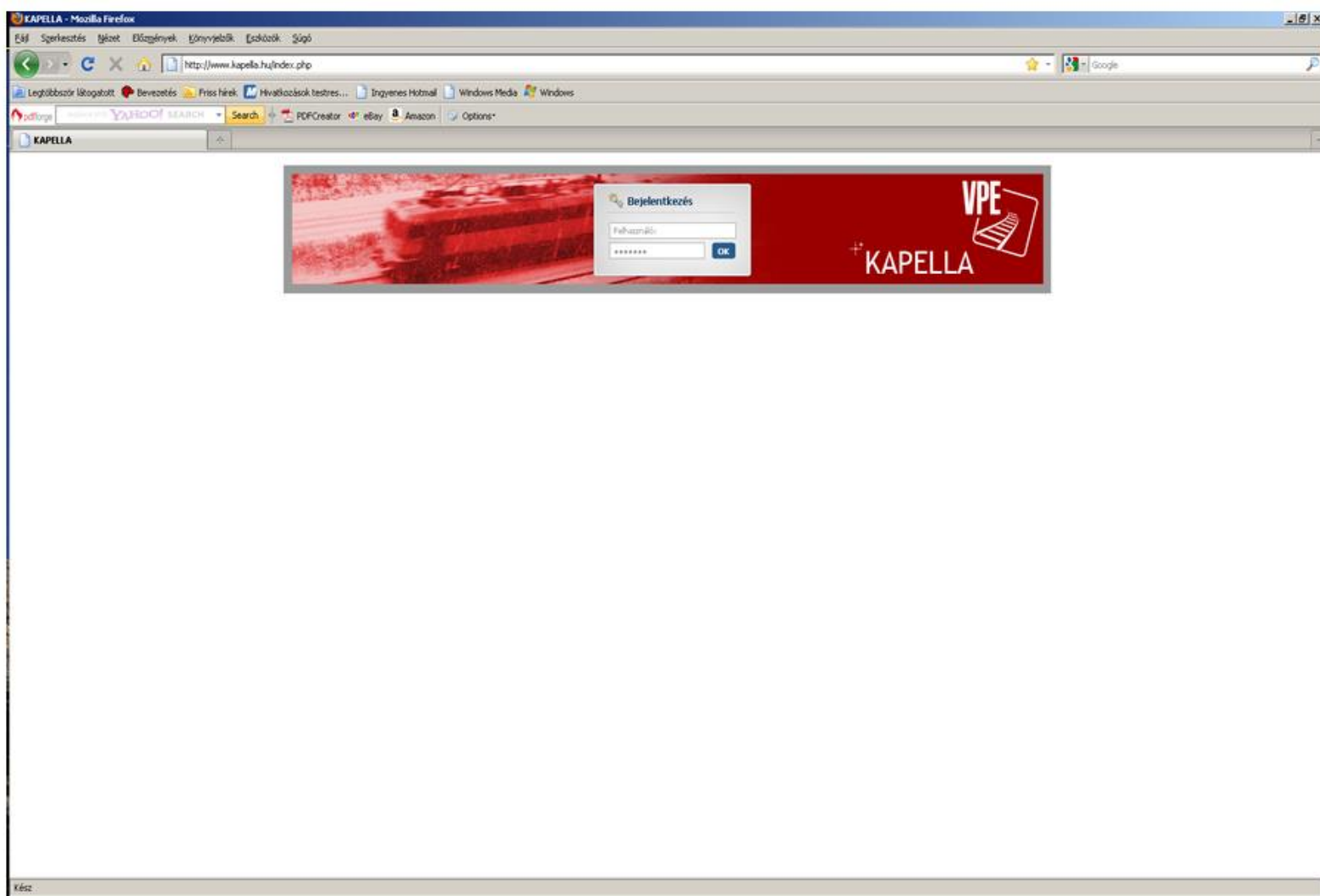
- allocating railway capacity for open access network,
- developing and publishing the Network Statement of IMs,
- determining network access charges,
- developing and publishing the Performance Regime.



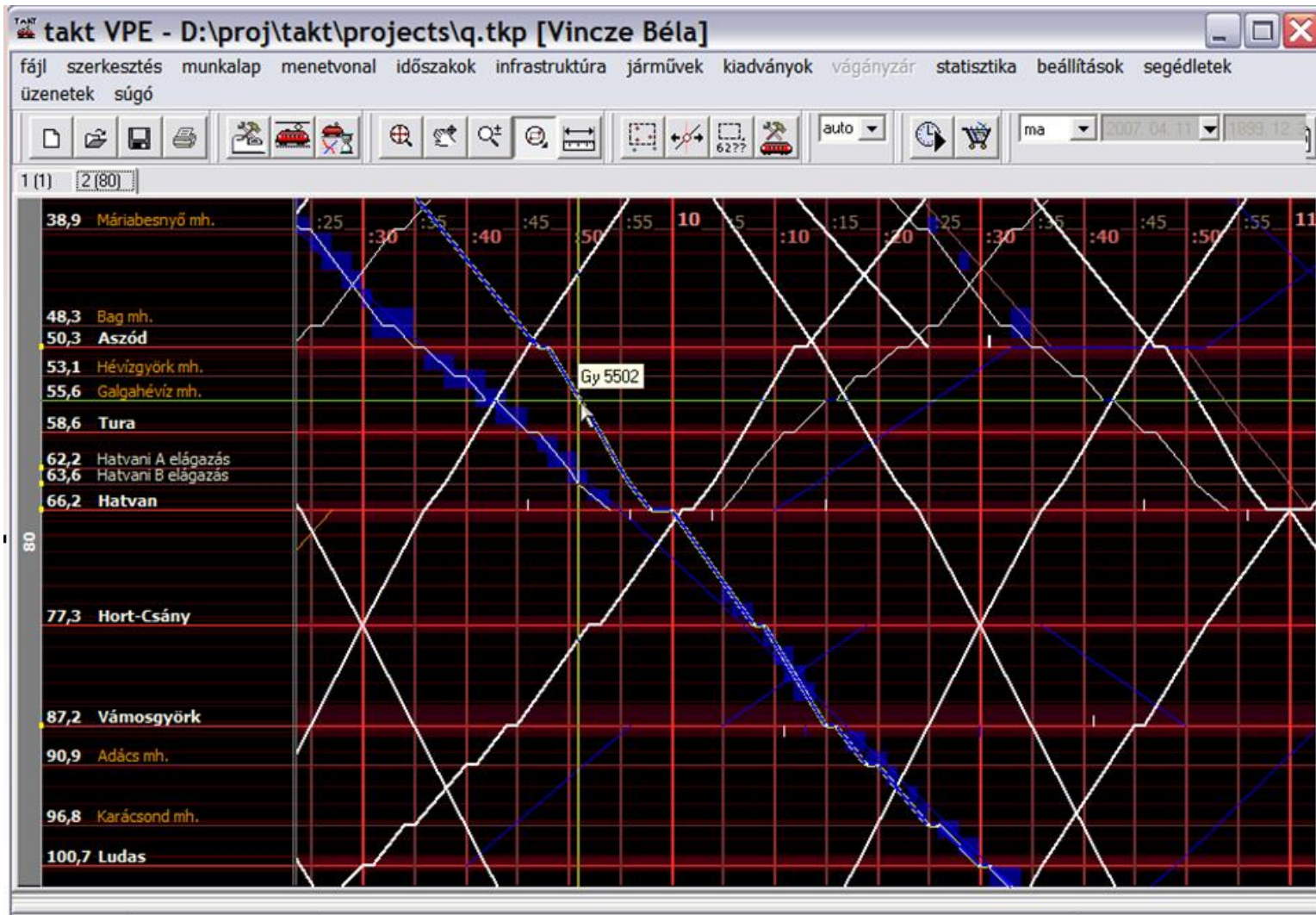
# Capacity allocation

- Strong cooperation among timetable constructors and OSSs
- 24 hours OSS service
- Types of train paths:
  - Annual
  - Late path
  - Mid-term
  - Ad hoc
  - Short-term
  - Train path for working train

# Kapella - Capacity allocation tool



# TAKT - timetabling tool





# International relations



- Regulation 913/2010/EU:

1. Rail Freight Corridor 6 (RFC 6) - Mediterranean Corridor



Almería-Valencia/Madrid-Zaragoza/Barcelona-Marseille-Lyon-Torino-Milan-Verona-Padua/Venice-Trieste/Koper-Ljubljana-Budapest-Zahony



2. Rail Freight Corridor 7 (RFC 7) - Orient/East-Med Corridor

Prague-Vienna/Bratislava-Budapest — Bucharest-Constanța — Vidin-Sofia-Thessaloniki-Athens

***Thank you for your attention!***

***Dóra Kondász***

International Relations Assistant

kondaszd@vpe.hu

